



Bristol Residential 2026

Tuesday 22nd to
Friday 25th September



Homefield Primary School



Itinerary

Residential Week = Mon 21 to Fri 25 Sep

In School:

- Mon 21 Sep

Bristol:

- Leave Tue 22 Sep
- Return Fri 25 Sep

All activities still need to be booked and will depend on final numbers, so this is an overview of the type of activity offered in the past.



Homefield Primary School



Monday

- School-based experience
 - Normal school times – wear PE kit
- Preparation activities to maximise the residential experience:
 - Slave trade history of Bristol (Colston).
 - Brunel and Cabot – links to Bristol.
 - Stonehenge history.
- Team-building in day groups.

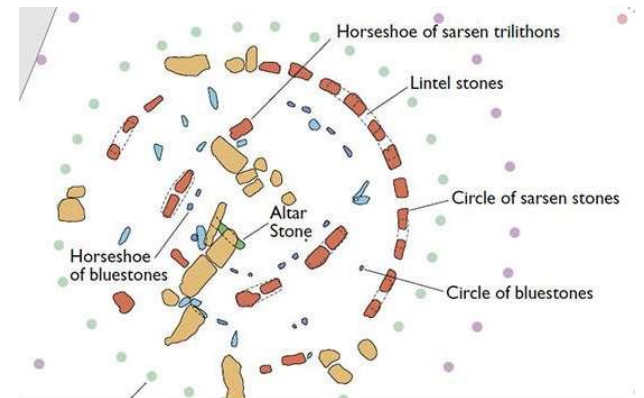
School based activities



Homefield Primary School



Tuesday



Stonehenge



Homefield Primary School



Learning Focus

Stonehenge

History

- Stone Age to Iron Age

Geography

- Types of settlement and land use
- Human and physical features

Further Information

<https://www.english-heritage.org.uk/visit/places/stonehenge/>



Homefield Primary School



Wednesday



SS Great Britain; Canoeing;
Bristol Walk – Clifton Suspension Bridge



Homefield Primary School

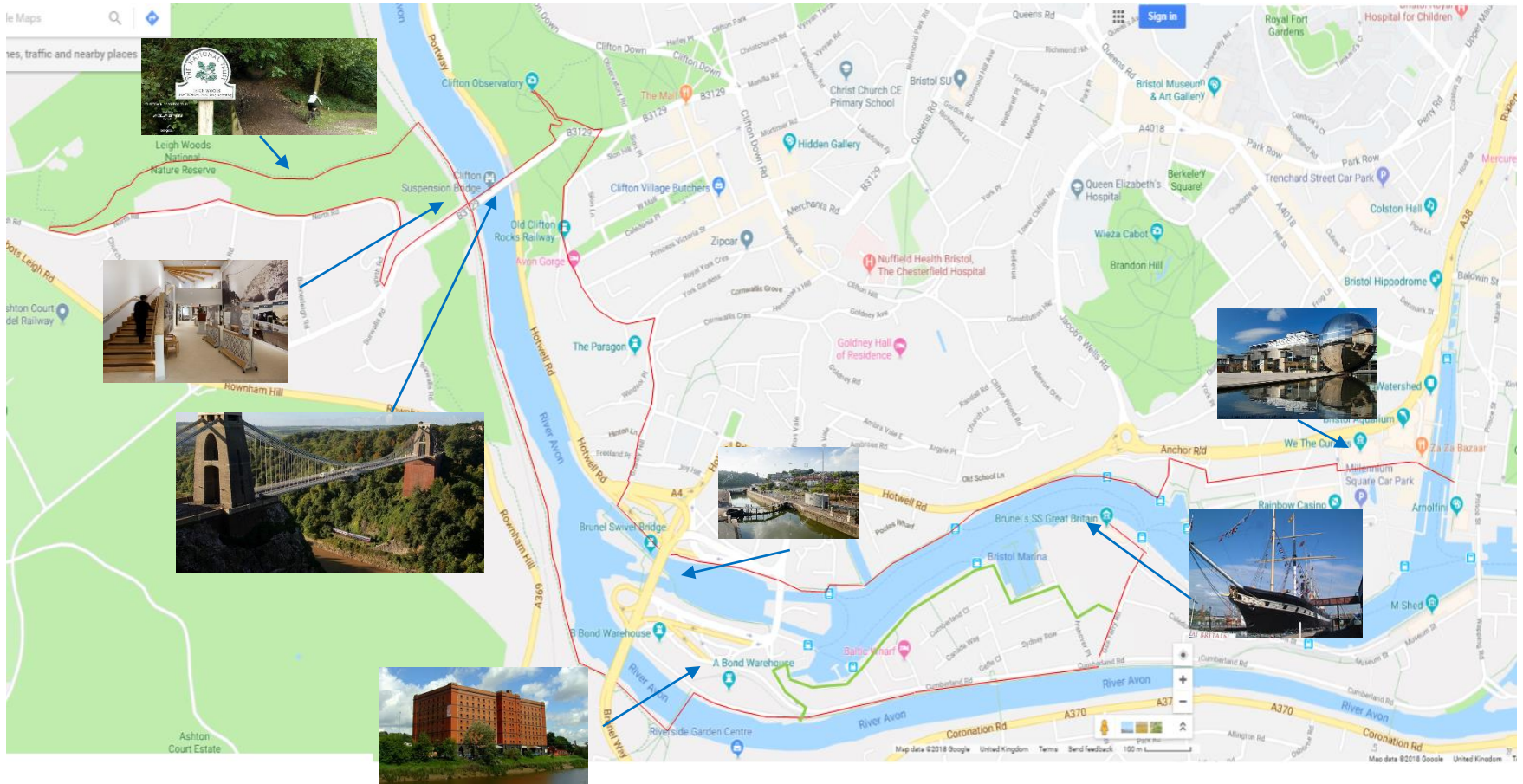


Learning Focus

- Clifton Suspension Bridge
 - DT Structures
- SS Great Britain
 - History of shipping
 - Victorian Britain
 - Isambard Kingdom Brunel - engineering
- River Avon
 - History of trade
 - Locks / DT – engineering
- Physical Education
 - Canoeing – Outdoor Adventurous Activities
 - Walking



Bristol Walk



Homefield Primary School



Further Information

• SSGB & IKB

- https://www.youtube.com/watch?v=K00xt_cxbl&list=PLA8BF37B0B3A38744 **Watch it!**
- <https://www.youtube.com/watch?v=sJGpVAjLt-8> (7 minutes) With Isambard Kingdom Brunel – **Watch it!**
- <https://www.youtube.com/watch?v=4NIqsB511zY> **IKB Watch it! (20 mins)**
- <https://www.youtube.com/watch?v=zovFQQ2SwBc> (10 mins) **IKB life dramatization Watch It**
- <https://www.youtube.com/watch?v=Xsr73Lp4SMk> (6Mins)

- <http://www.bbc.co.uk/archive/chronicle/8628.shtml> (1970 recovery 50 mins)
- <https://www.youtube.com/watch?v=ayJDPjeoWhQ> (2 mins)
- <https://www.youtube.com/watch?v=HLObOWZjo5I> (SS Great Eastern)

• John Cabot

- <https://www.youtube.com/watch?v=pJOvmicAGjw> (3 mins Biography)
- <https://www.youtube.com/watch?v=2ZUIh1ILGts> (12 minutes – Child friendly) **Watch This!**



Thursday



Cabot Tower, Climbing, We The Curious, ZaZa Bazaar



Homefield Primary School



Learning Focus

Science

- We the Curious
 - Planetarium
 - Earth & Space (Year 5)

History

- John Cabot Tower

Physical Education

- Climbing – Outdoor Adventurous Activities

Further Information

<https://www.wethecurious.org/>
<https://solarsystem.nasa.gov/planets/>

<https://www.redpointbristol.co.uk/>



Homefield Primary School



Friday



Bristol Aerospace



Homefield Primary School



Learning Focus

Bristol Aerospace

- History of Flight including space exploration
- Technology
 - Aeronautics over time
 - Concorde (supersonic travel)
- Science – Sound and forces

Further information

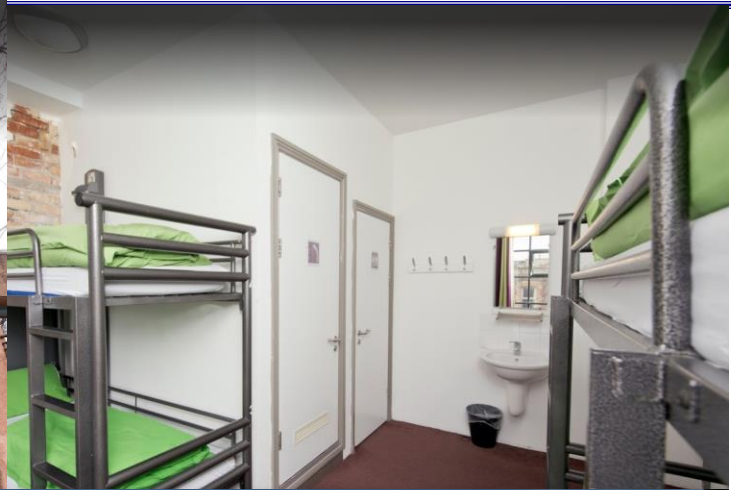
<https://aerospacebristol.org>



Homefield Primary School



YHA – Bristol Youth Hostel



Homefield Primary School



Groups / Friends

- Would love to take all 126 children but will aim for minimum of 90 children attending
- Room groups of 3-6 (all children get a friend)
- 3 - 4 groups in the day of up to 30 children
 - Room groups stay together (same friends)
 - 1 teacher, 1 TA and 2 parents per day group
 - 4 subgroups of 7/8 children with an adult
- Coach seats in pairs - next to or close to friends



Food

Breakfast

7:30 – 8:00 – 8:30

- Buffet

- Traditional English
- Vegetarian options
- Toast
- Tea (children not allowed coffee)
- Cereal
- Fruit

Tuesday

- Journey Snacks

Lunch - Packed

- Sandwich
- Biscuit
- Water
- Crisps
- Fresh Fruit



Food

Youth Hostel dinners

- Tue & Wed
- 17:15 – 17:45 – 18:15
- Veg & Vegan options
 - Jacket Potato (beans/cheese)
 - Pesto Pasta
 - Mac and Cheese
 - Falafel
 - Pasta and Vegan balls
- Meat options
 - Chicken Thigh
 - Sausage and Mash

• Desserts

- Chocolate Brownie
- Mini sugared doughnuts
- Chocolate Fudge Cake
- Choc ice
- Fresh fruit

ZaZa Bazaar



Homefield Primary School



Evening

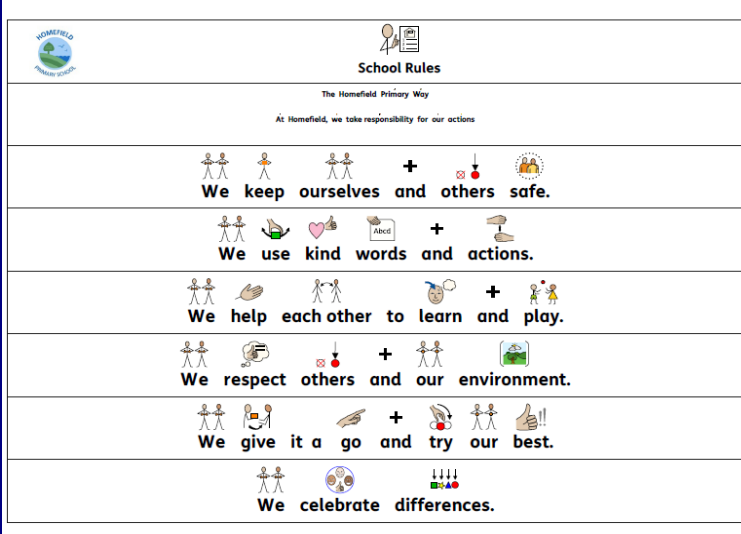
- Evening meals
- Leisure
 - Evening Stroll
 - Chill-out option



- Lounge
 - Children will be able to have some downtime with board games, chatting or reading.
- Hot Chocolate
 - All children will be able to enjoy a cup of hot chocolate /water at the end of the day – just before bedtime.

Rules

- **Bedtime – typically:**
 - 9 pm PJ's and teeth
 - 9.30 pm to 6.45 am Lights out and sleep – quiet until 7.00 am
- **Travel – walking, bus, coach**
 - Remain alert - what, when and how
- **The Homefield Way**
 - School rules
 - School values



School Rules
The Homefield Primary Way
At Homefield, we take responsibility for our actions

We keep ourselves and others safe.

We use kind words and actions.

We help each other to learn and play.

We respect others and our environment.

We give it a go and try our best.

We celebrate differences.

Homefield Primary Values

Respect

Kindness Courtesy
Consideration Trust Empathy
Appreciation Gratitude Care
Compassion Equality

Belonging

Collaboration Cooperation Love
Friendship Teamwork Inclusive
Pride

Responsibility

Opportunity Independence
Moral responsibility
Sustainability and Environmental
Honesty Reflection
Healthy body and mind
Safety

Resilience

Persistence Hope Courage
Ambition Adaptable
Determination

Creativity

Problem solving Curiosity
Excellence Resourcefulness



Homefield Primary School



What the trip really teaches

- **Independence**
 - Being able to stay away from home for 3 nights
 - Managing their timetable and belongings
- **Resilience**
- **Friendships**

Homefield Primary Values



What if I don't want to go?



Homefield Primary School



What if I don't want to go?

- School-based experience (normal school times)
- Non-school uniform (suitable for activities)
- Activities may include
 - Walk to beach + picnic
 - Bowling
 - Film
 - Stop Motion Animation
 - PE
 - Forest School activities
 - Team-building



How to book

- **Complete expression of interest form by Mon 1 Dec**
 - [Year 6 Residential Week 2026 - Expression of Interest](#)
- **Total cost approximately £350 (max. £25 either way)**
 - Financial support may be available (especially PP)
 - Do ask if you qualify - finance@homefield-primary.co.uk
 - Payment plan available until June
 - £50 deposit, refundable if trip cancelled, by Mon 2 Feb, 8am
 - £50-100 each month, flexible
 - Final payment amount dependent on final cost
- **Non-Bristol activities will cost up to £25**



Homefield Primary School



Q&A

- If phones aren't allowed, how will I know how my child is on the trip?

We will send regular updates on the school Facebook page along with photos, so families are kept abreast of their child's experience. Since our schedule is so busy and the children constantly entertained and stimulated, we find that they fully immerse themselves in the trip, which keeps homesickness to a minimum.

- Are boys and girls' bedrooms mixed together?

We keep boys and girls on different floors as much as possible (along with separate bathrooms), but if we have to use the same floor, bedrooms are kept separate with staff members' rooms in-between.

- How are rooms allocated?

We give the children a choice of friends (of the same gender) who they would be happy to share a room with (can be from other classes), then we whittle it down from there, ensuring every child is sharing with at least one person from their list.

- Do we stay with our roommates during daily activities?

Yes, but we try to ensure we mix up groups so the children experience different peer dynamics, which will also be supportive of transition to secondary school.



Homefield Primary School

